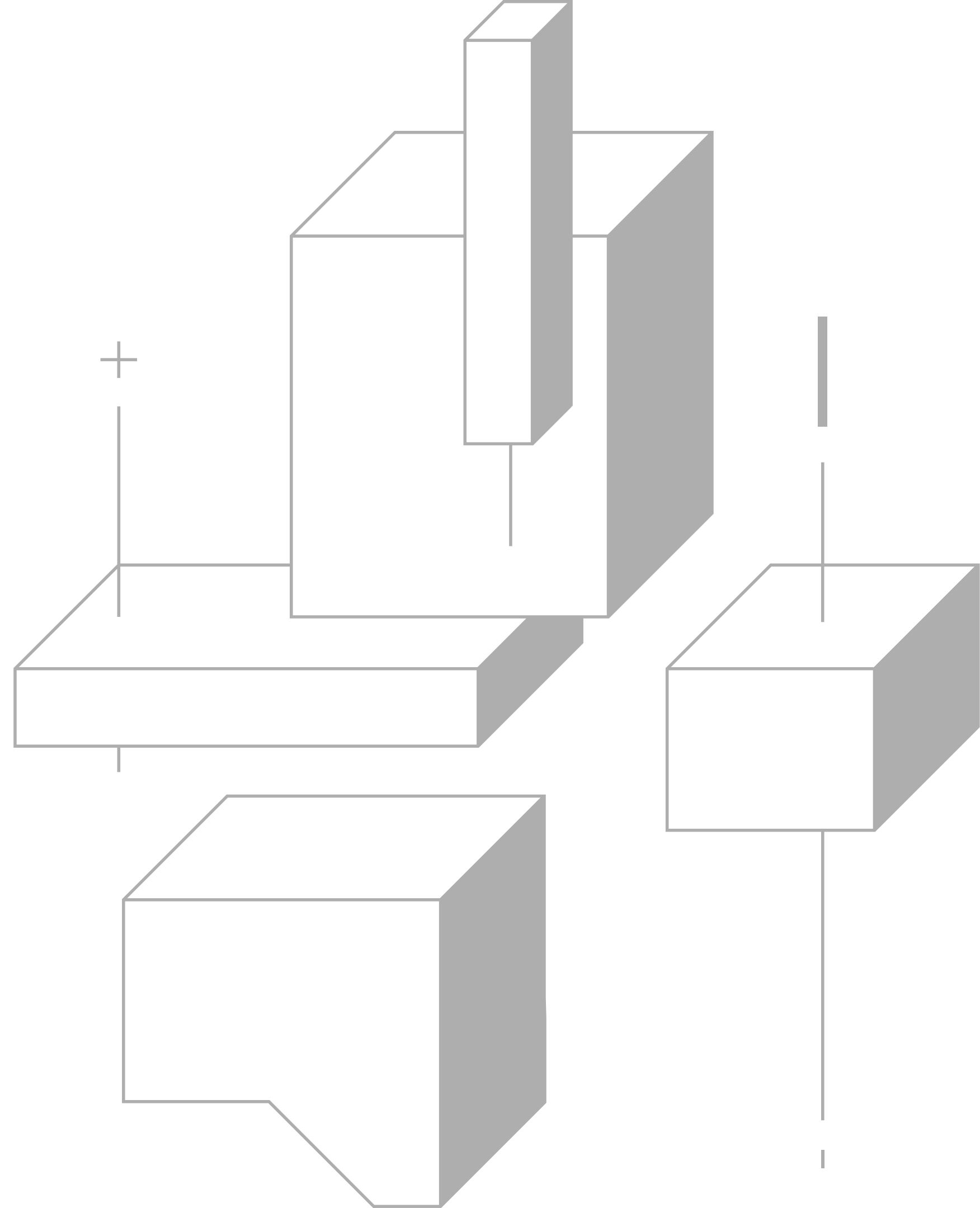


SAHALA.
DESIGN



ABOUT US..

Sahala specializes in architecture, interior design, and execution, backed by strong project management expertise. We create tailored, functional, and visually stunning spaces, delivering seamless solutions from concept to completion.

With a focus on quality and precision, we manage every phase of a project, ensuring timelines, budgets, and client expectations are met. Our portfolio spans luxury residences, hospitality, and commercial projects, all showcasing our commitment to excellence in design and execution.

At Sahala Design, we turn vision into reality with unmatched creativity and craftsmanship.

CONTENTS

O1 VISION

**O2 ARCHITECTURE
DESIGN**

O3 INTERIOR DESIGN

O4 SHOP DROWING

O5 CONTRACTING

O6 CONTACT



OUR VISION

TO BE A LEADING FORCE IN SHAPING THE FUTURE OF ARCHITECTURE, INTERIOR DESIGN, AND PROJECT EXECUTION ACROSS SAUDI ARABIA, THE GCC, AND THE MENA REGION. WE STRIVE TO CONTRIBUTE TO THE TRANSFORMATION OF THE BUILT ENVIRONMENT THROUGH INNOVATIVE, SUSTAINABLE, AND WORLD-CLASS SOLUTIONS. WE AIM TO CREATE ICONIC SPACES THAT ENHANCE THE QUALITY OF LIFE, FOSTER ECONOMIC GROWTH, AND CELEBRATE THE CULTURAL HERITAGE AND ASPIRATIONS OF THE REGION.

OUR SERVICES

Architecture

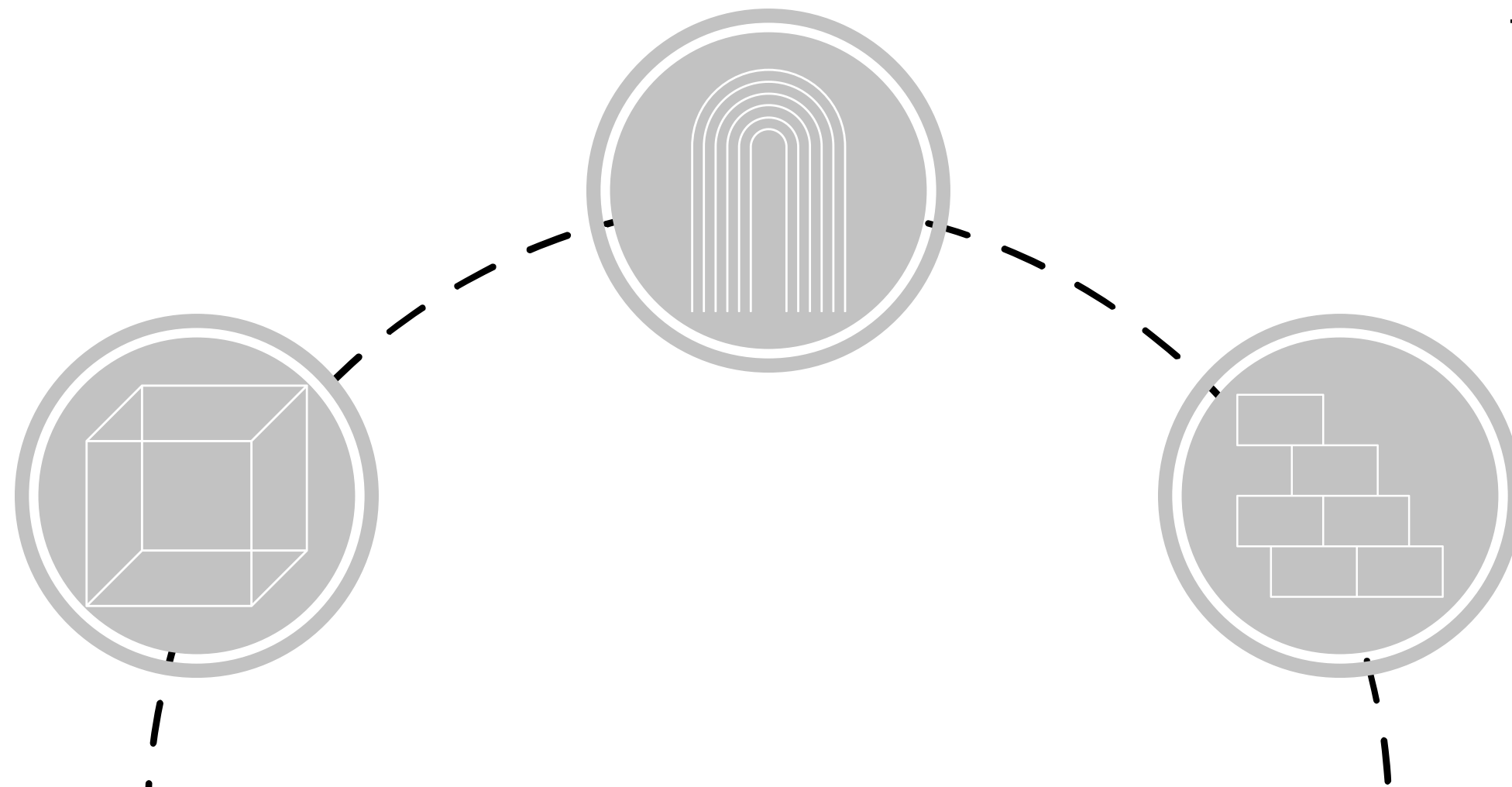
We consider studying the external facades with 3D design and executive drawings

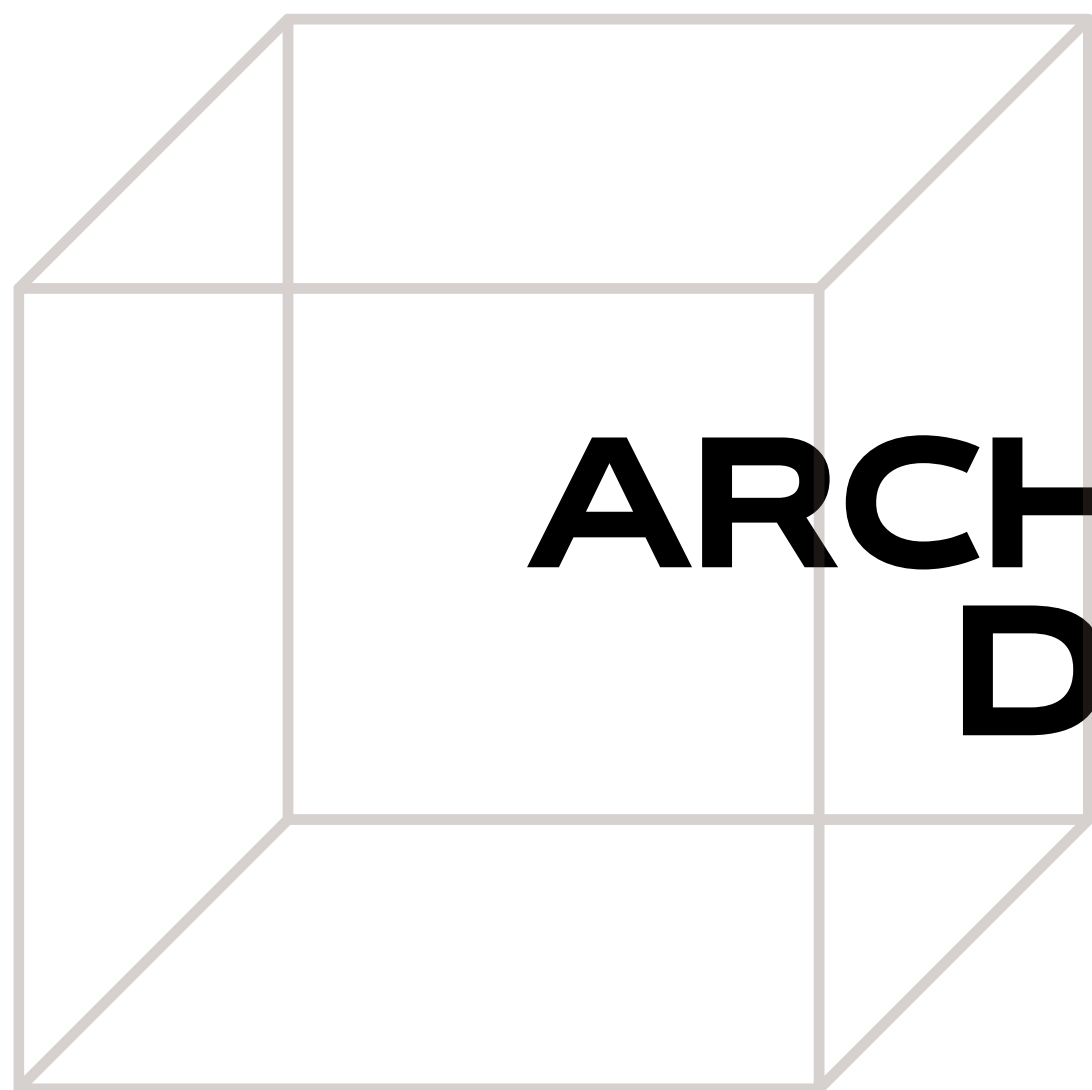
Interior Design

We take into account the study of furniture distribution along with 3D interior design and executive drawings

Contracting

We manage your project in terms of calculating quantities and implementing finishing works until project delivery





ARCHITECTURE DESIGN

VILLA DESIGN

Total area 300 m2 villa containing two living rooms, a kitchen, a swimming pool, a club, a cinema, and 4 master bedrooms.



THE ONE

ARCHITECTURAL DESIGN FOR A VIBRANT SHOP AND RESTAURANT COMPLEX

The building contains:

Ground Floor + M : 4 large shops

First Floor: restaurant & Lounge

Second Floor: 1 Office

Parking: 19 Car Parking



WESTERN STEEL FACTORY

ARCHITECTURAL DESIGN FOR A VIBRANT
SHOP AND RESTAURANT COMPLEX

THIS PROJECT FOCUSES ON THE ARCHITECTURAL
REDEVELOPMENT OF THE WESTERN STEEL FACILITY,
INTEGRATING MODERN DESIGN PRINCIPLES TO
REVOLUTIONIZE ITS INFRASTRUCTURE.

THE GOAL IS TO CREATE A VISUALLY STRIKING
AND HIGHLY FUNCTIONAL INDUSTRIAL ENVIRONMENT
THAT SUPPORTS EFFICIENT STEEL PRODUCTION
AND OPERATION.



RINAZ FACTORY

4000 sq m factory for making
cookies and baked goods



TRANSFORMING RETAIL SPACES

A Modern Approach To hypermarket
Design





THE BOTIQUE HUB

Modern Workspace Redefined

A sustainable four-story commercial building with a sleek, contemporary design. It offers flexible office layouts, incorporating energy-efficient features, and ground-floor retail shops for a vibrant urban experience.



INTERIOR DESIGN

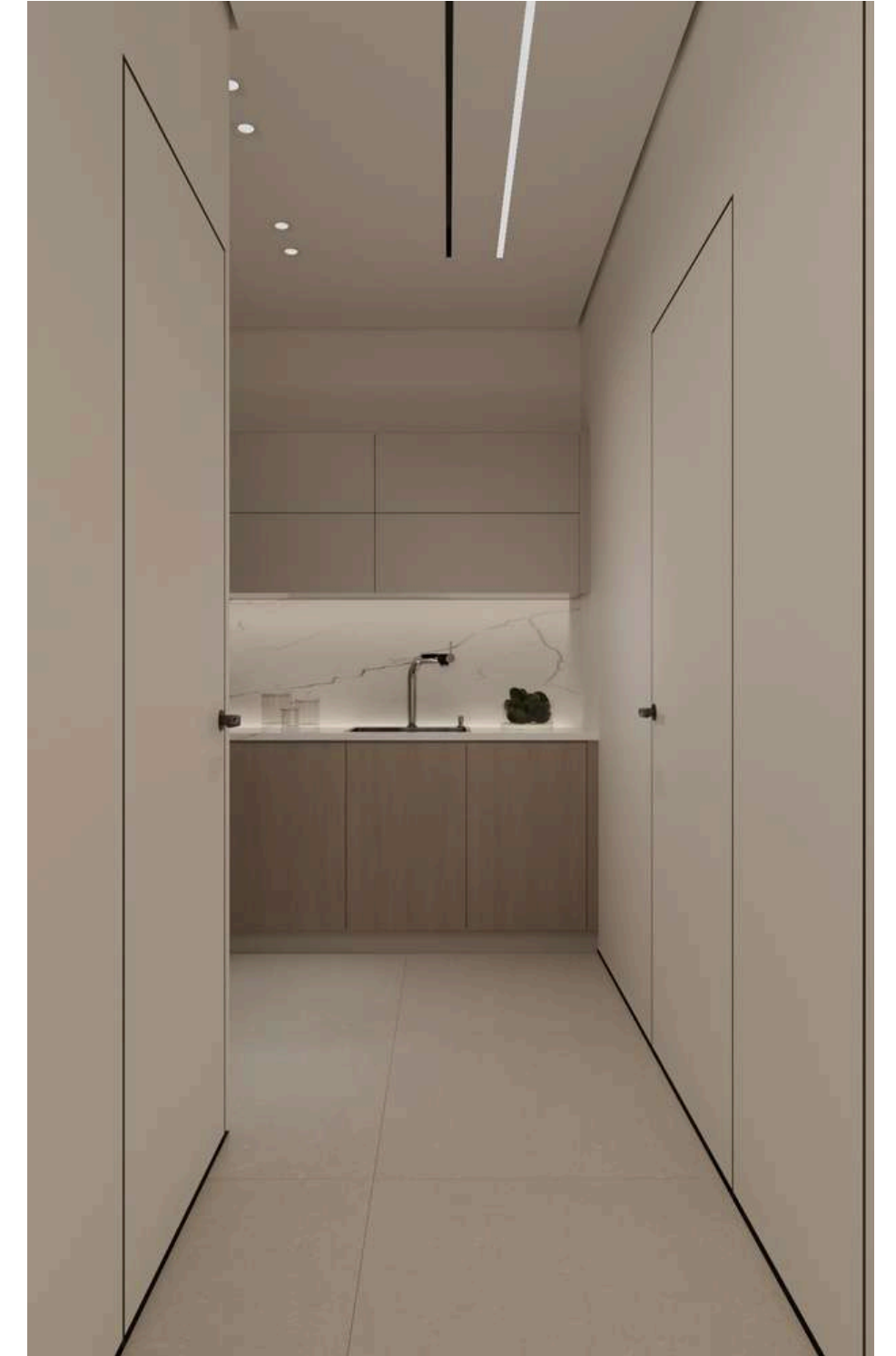


TIMELESS

—

A MODERN HOME WITH
A MINIMALIST SOUL

The design of this apartment showcases minimalist elegance with a focus on clean lines, neutral tones, and a harmonious blend of form and function.





MODERN ELEGANCE

—
IN APARTMENT LIVING - DUBAI

This contemporary apartment design combines sleek lines, minimalistic aesthetics, and sophisticated materials to create a functional yet luxurious living space.





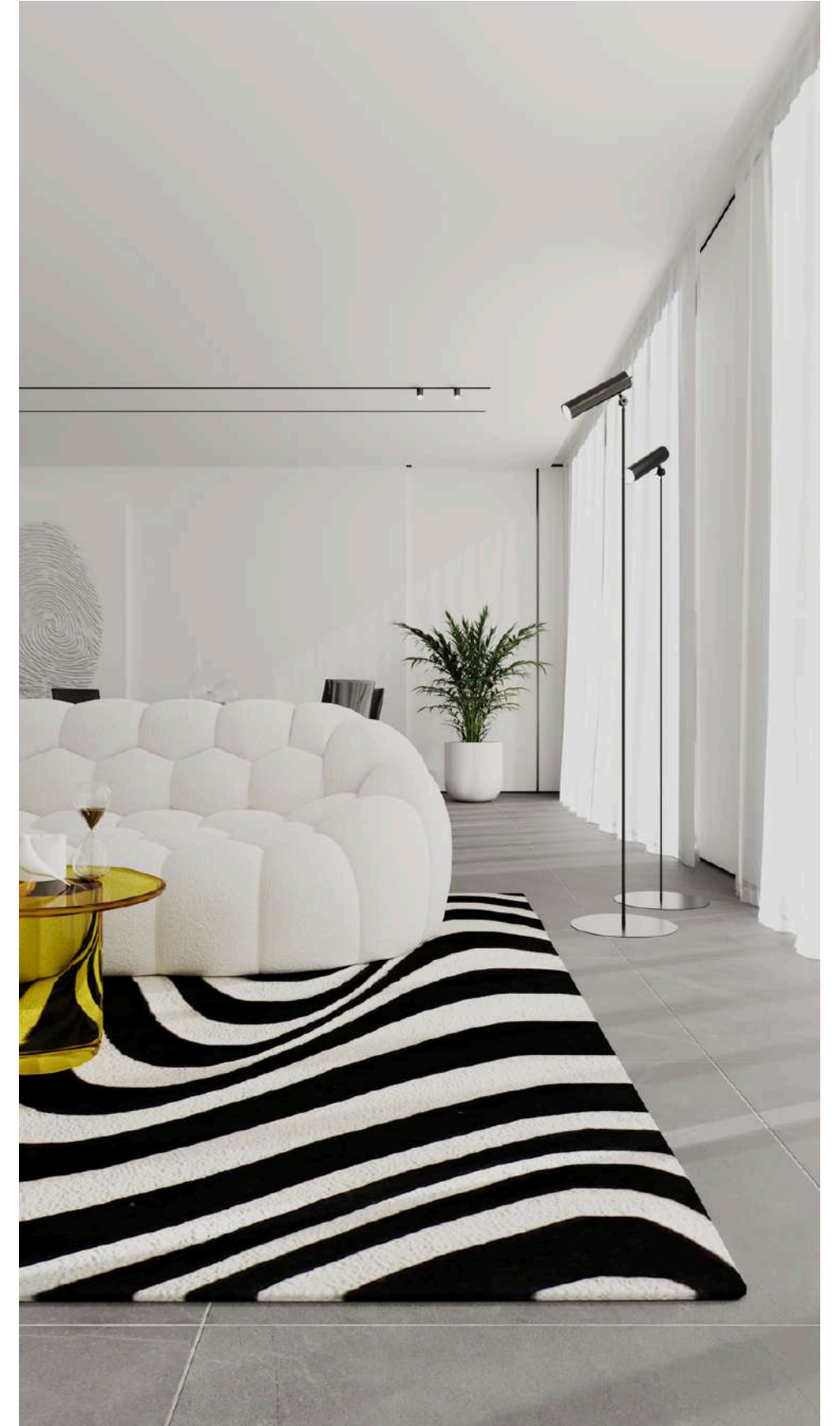


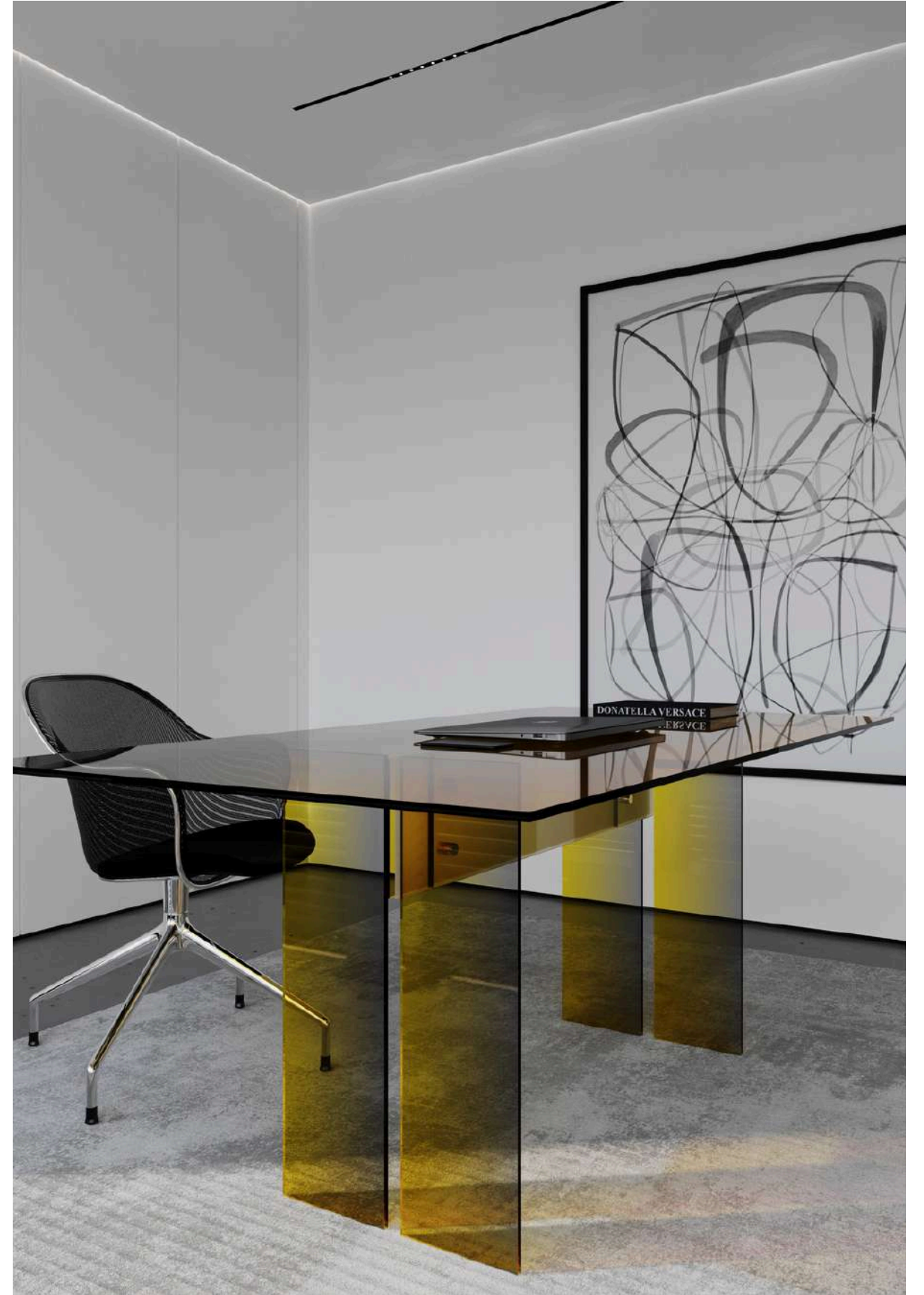
MINIMALIST WHITE

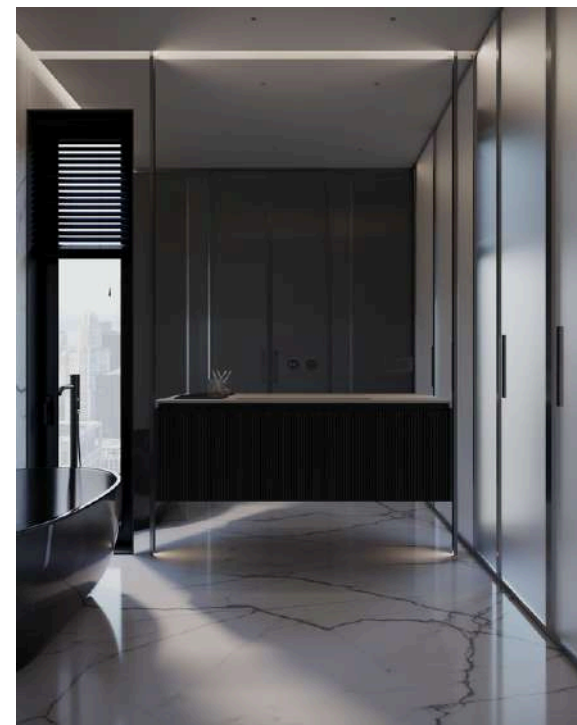
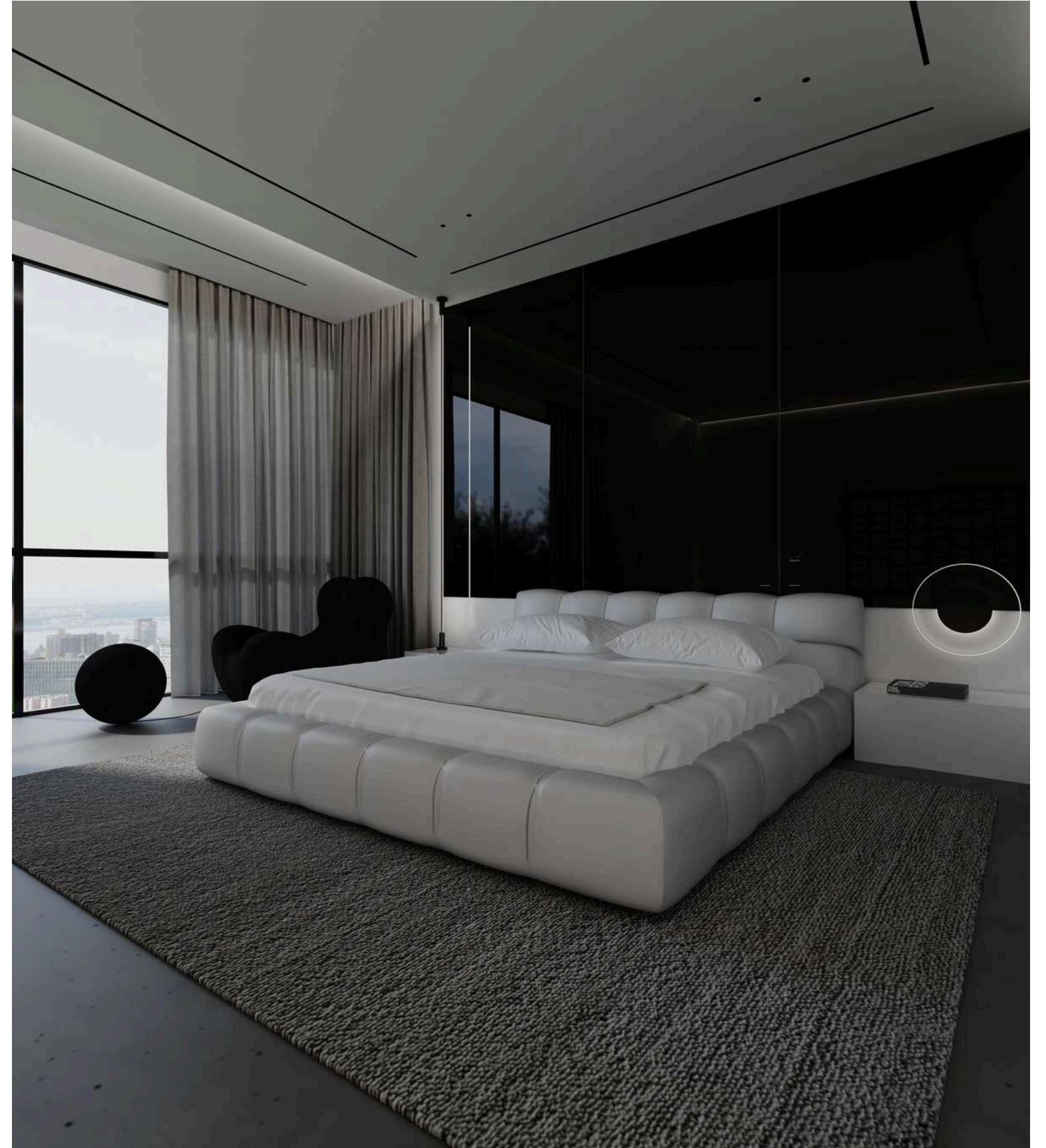
—

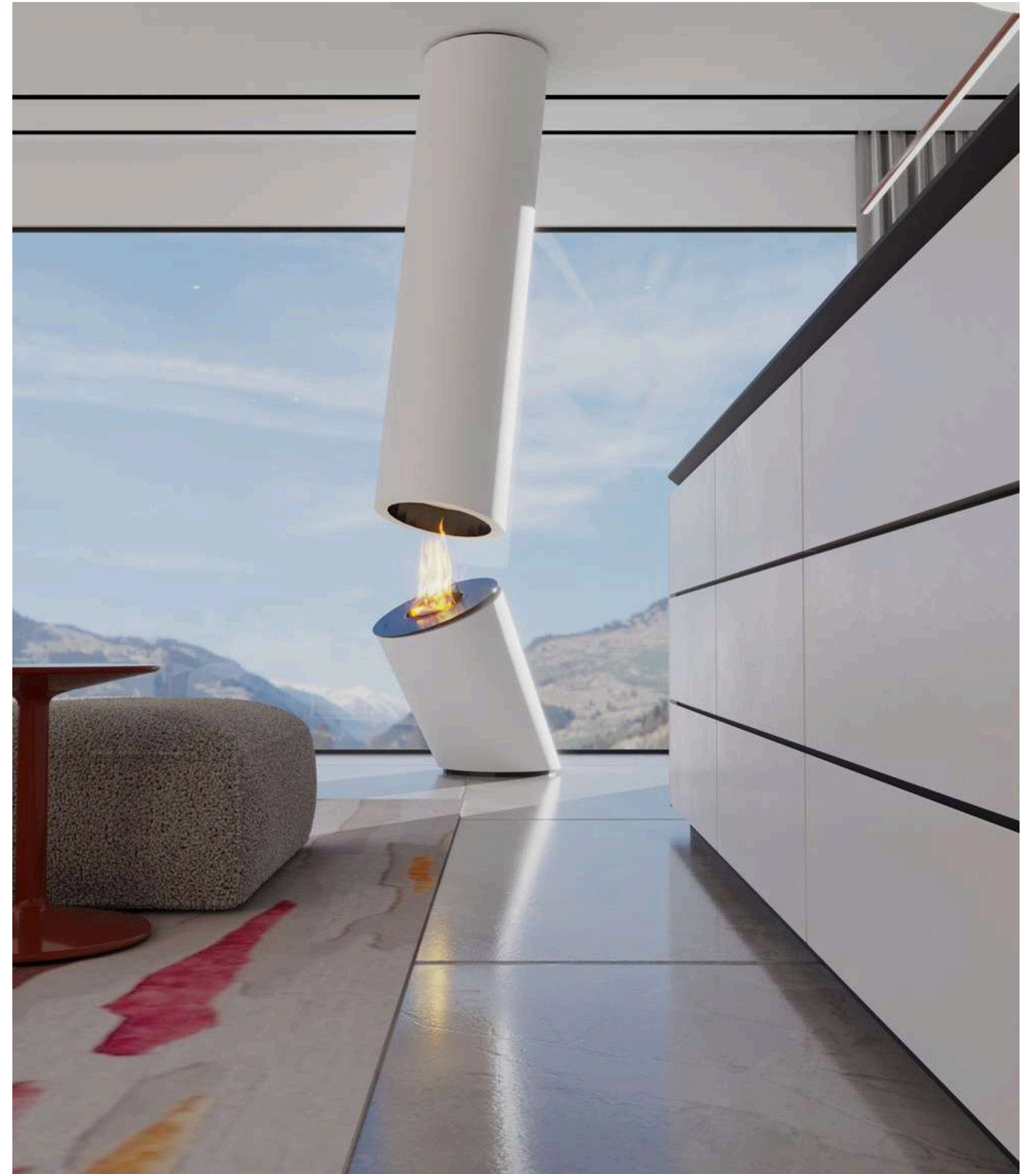
LIVING WITH A SPLASH OF
VIBRANT YELLOW

This minimalist living room features a clean white palette, elevated by subtle yet bold accents of yellow, creating a bright and inviting modern space.





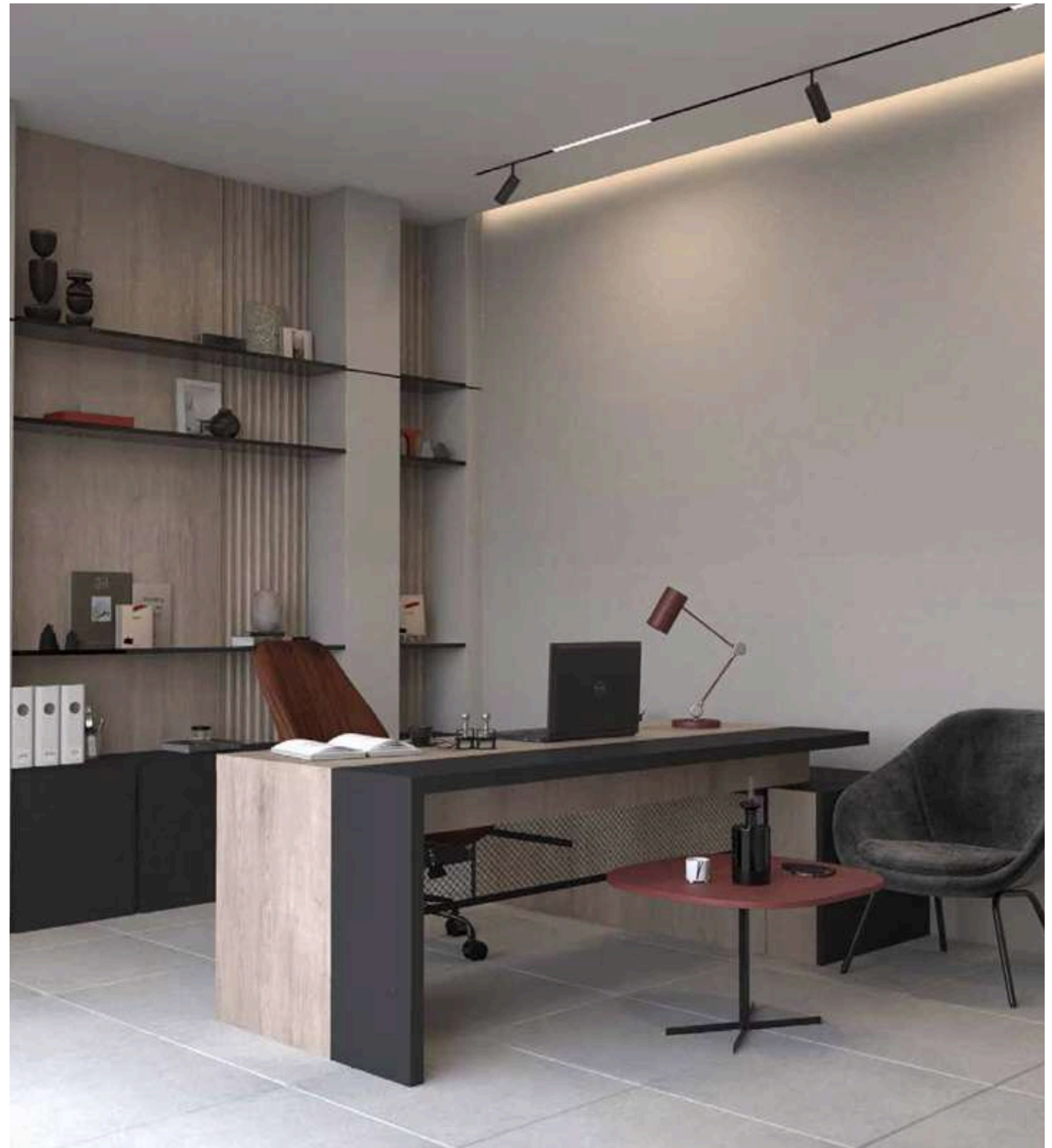


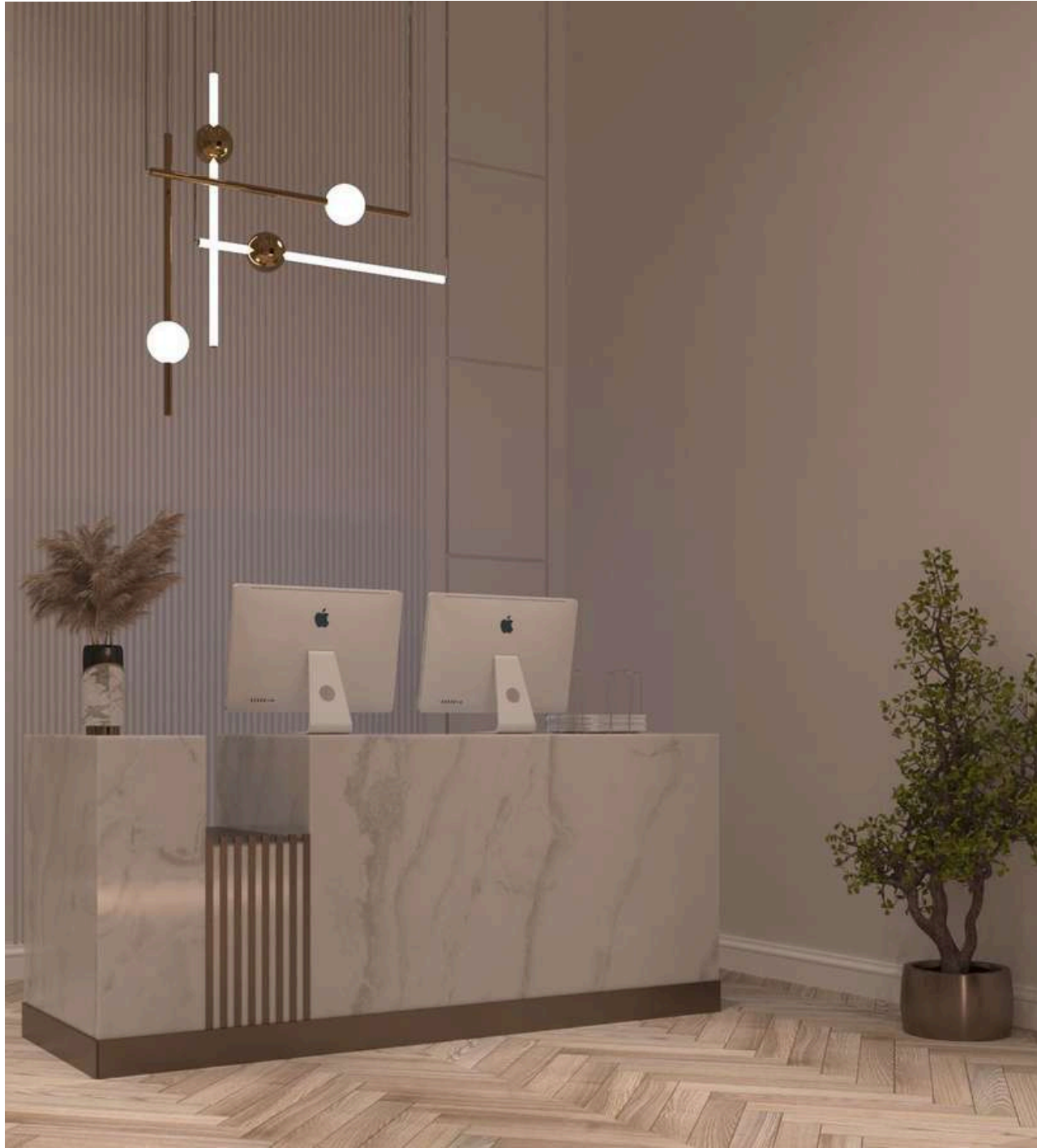




MODERN WORKSPACE SOLUTIONS

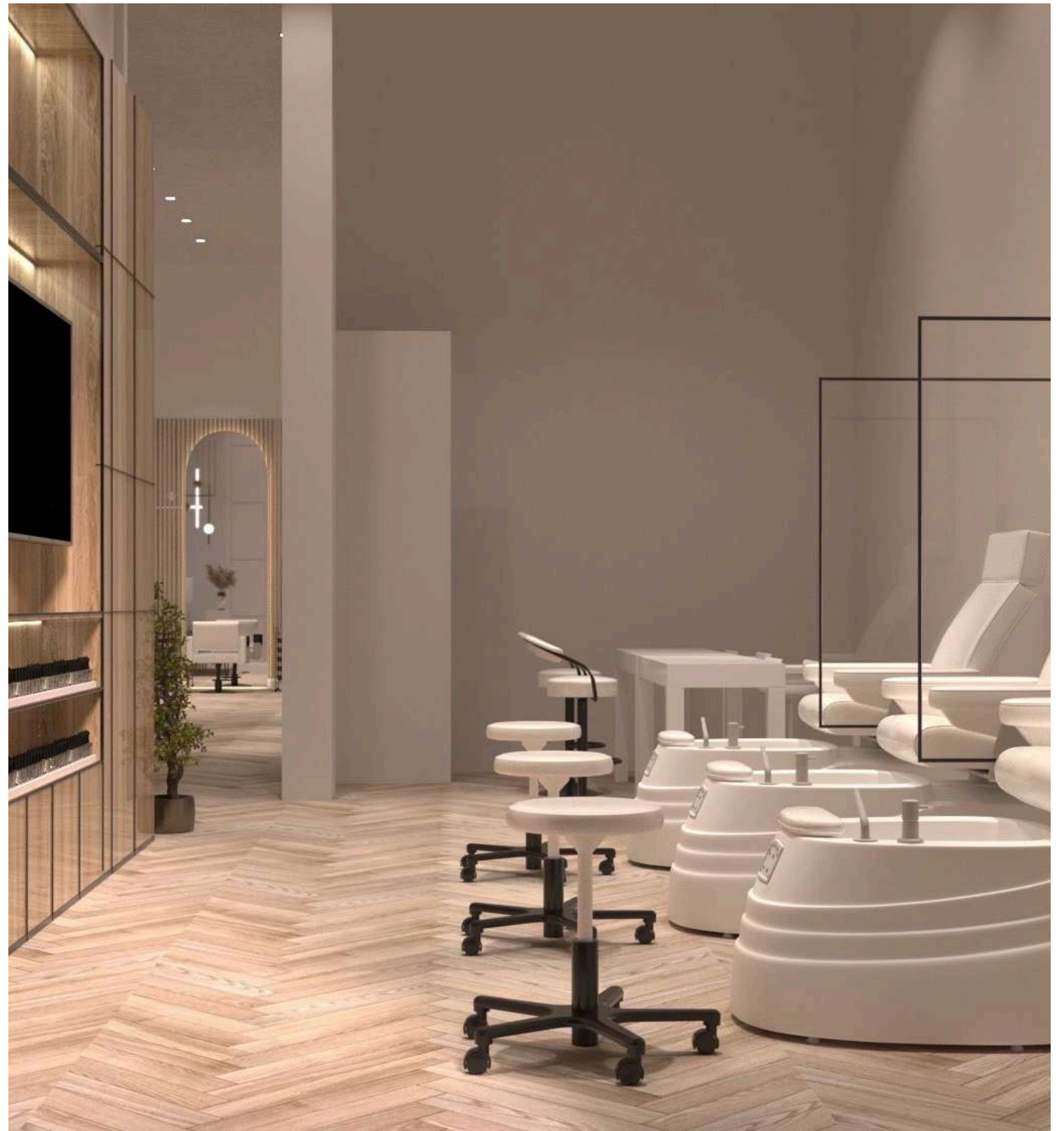
**INTERIOR DESIGN FOR
AL FAWZAN FACTORY OFFICES**





ELEGANCE REDEFINED

**LUXURIOUS INTERIOR DESIGN
FOR A BEAUTY SALON IN JEDDAH**



CONTEMPORARY MODERN LIVING AREA DESIGN FOR A RIYADH VILLA

THIS LIVING AREA IS DESIGNED IN A SLEEK CONTEMPORARY MODERN STYLE, FEATURING CLEAN LINES, OPEN SPACES, AND A NEUTRAL COLOR PALETTE WITH BOLD ACCENTS. THE LAYOUT EMPHASIZES COMFORT AND FUNCTIONALITY WHILE MAINTAINING A MINIMALIST AESTHETIC. HIGH-END MATERIALS, INCLUDING SMOOTH FINISHES AND MODERN FURNITURE, CREATE A SOPHISTICATED YET INVITING ATMOSPHERE, PERFECT FOR BOTH RELAXATION AND SOCIAL GATHERINGS. NATURAL LIGHT ENHANCES THE SPACE, HIGHLIGHTING THE BALANCE OF LUXURY AND SIMPLICITY.





SLEEK AND SOPHISTICATED INTERIOR DESIGN FOR A RESIDENTIAL VILLA IN RIYADH

THE PROJECT CENTERS ON CREATING A CONTEMPORARY MINIMALIST INTERIOR DESIGN FOR A RESIDENTIAL VILLA IN RIYADH. THE DESIGN WILL FEATURE CLEAN LINES, OPEN SPACES, AND A NEUTRAL COLOR PALETTE TO EVOKE A SENSE OF CALM AND REFINEMENT.





DINING ROOM



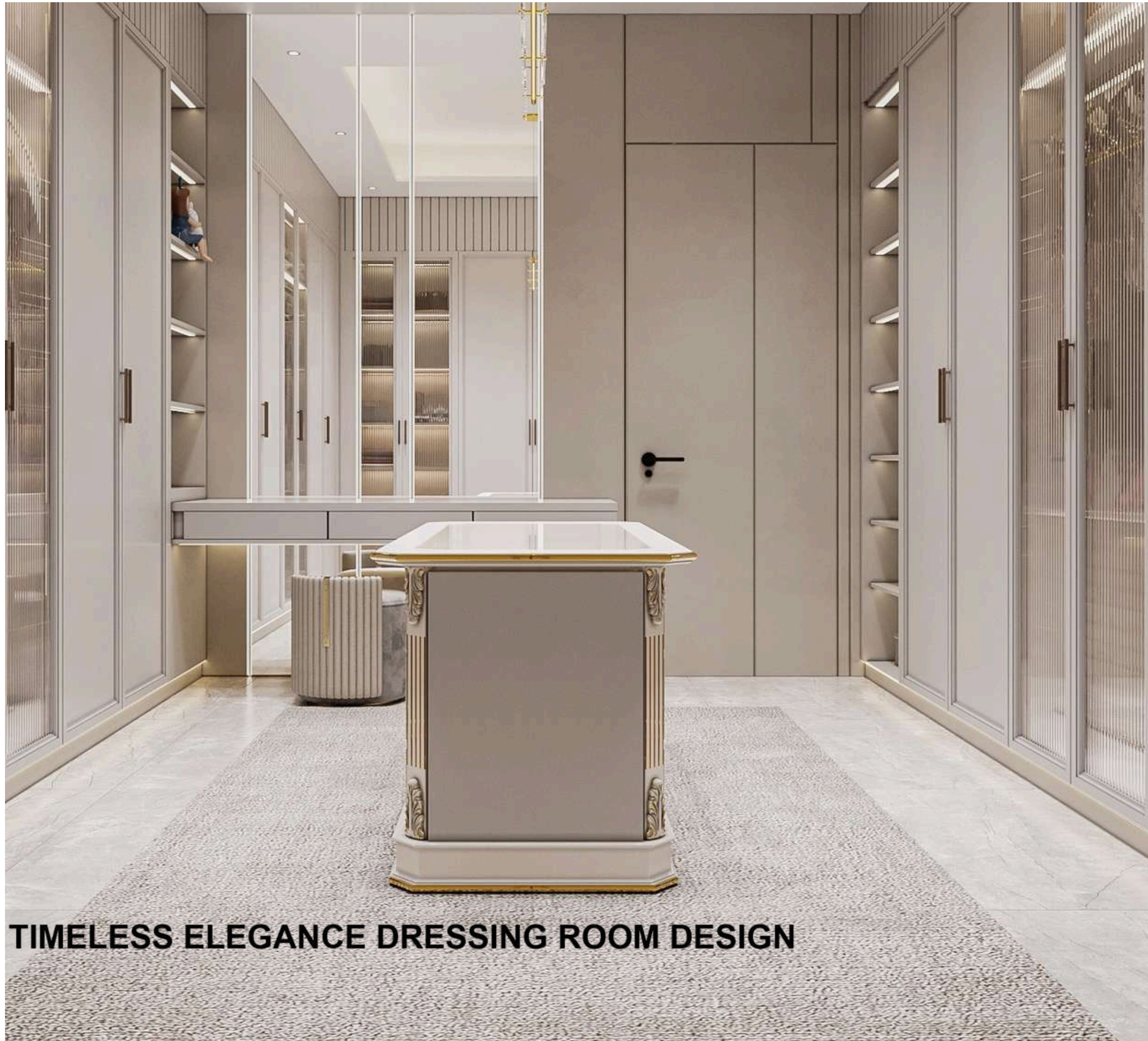
CUTTING-EDGE KITCHEN DESIGN



**THE BEDROOM DESIGN EXUDES CALM AND LUXURY
WITH A CONTEMPORARY MODERN STYLE FOCUSED
ON SIMPLICITY AND COMFORT.**

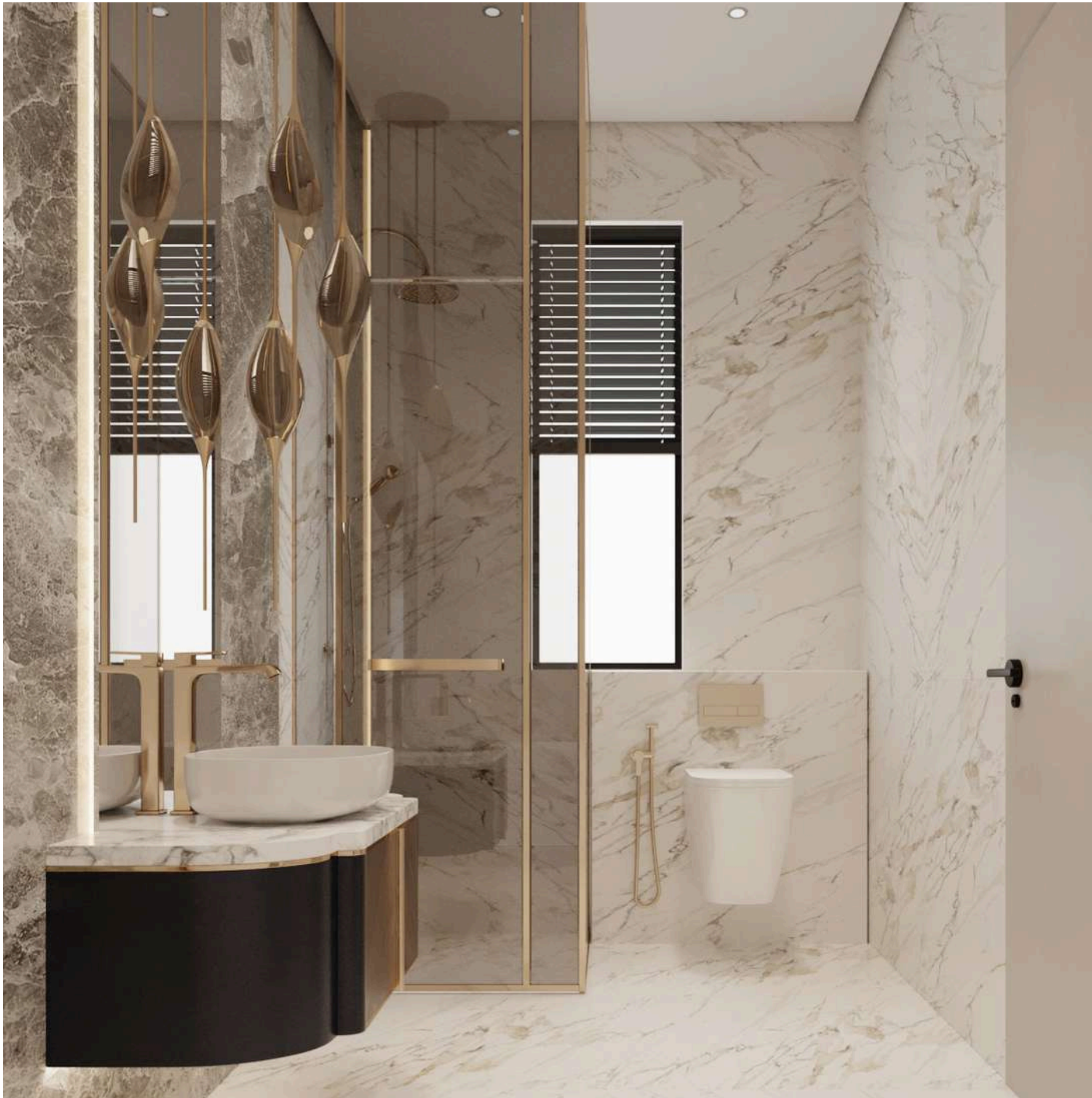






TIMELESS ELEGANCE DRESSING ROOM DESIGN







ELEGANT HARMONY MARBLE AND WOOD BATHROOM DESIGN







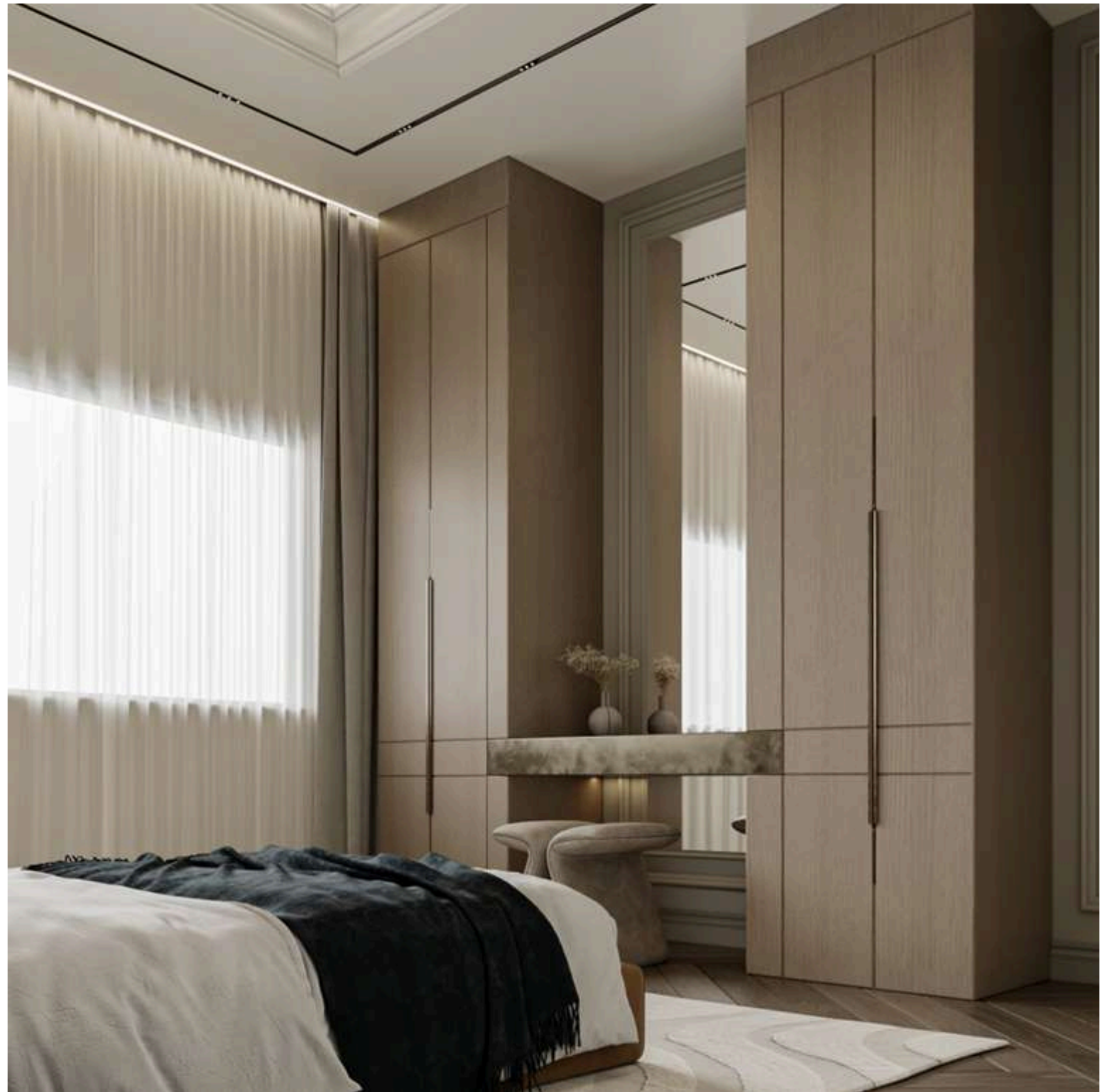


THIS LUXURIOUS OFFICE DESIGN FEATURES A BREATHTAKING FLOOR-TO-CEILING MARBLE BACKGROUND, CREATING A BOLD STATEMENT OF ELEGANCE AND POWER. THE RICH, POLISHED MARBLE SERVES AS THE CENTERPIECE, ENHANCING THE SPACE WITH ITS TIMELESS BEAUTY AND SOPHISTICATION.









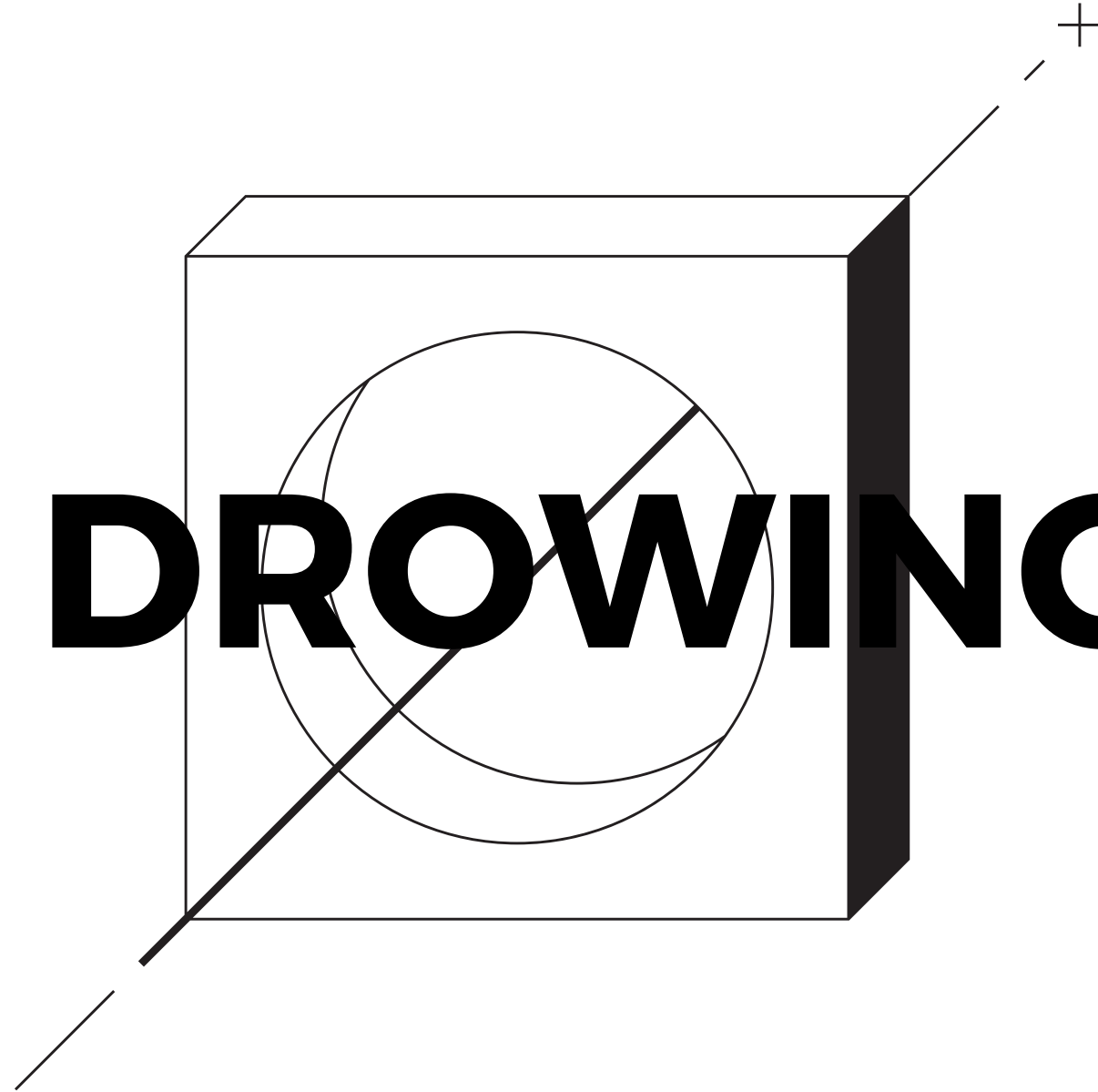


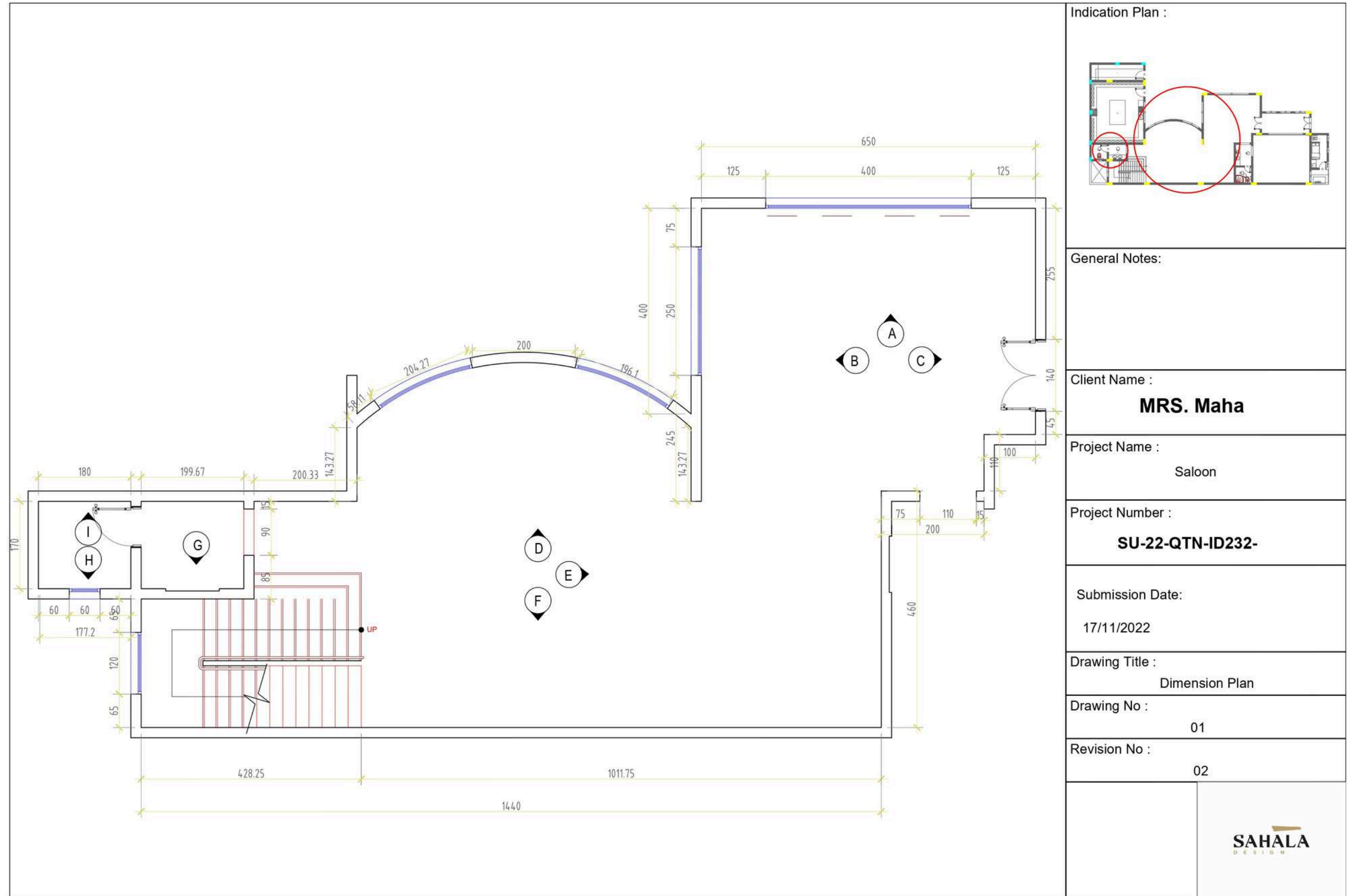


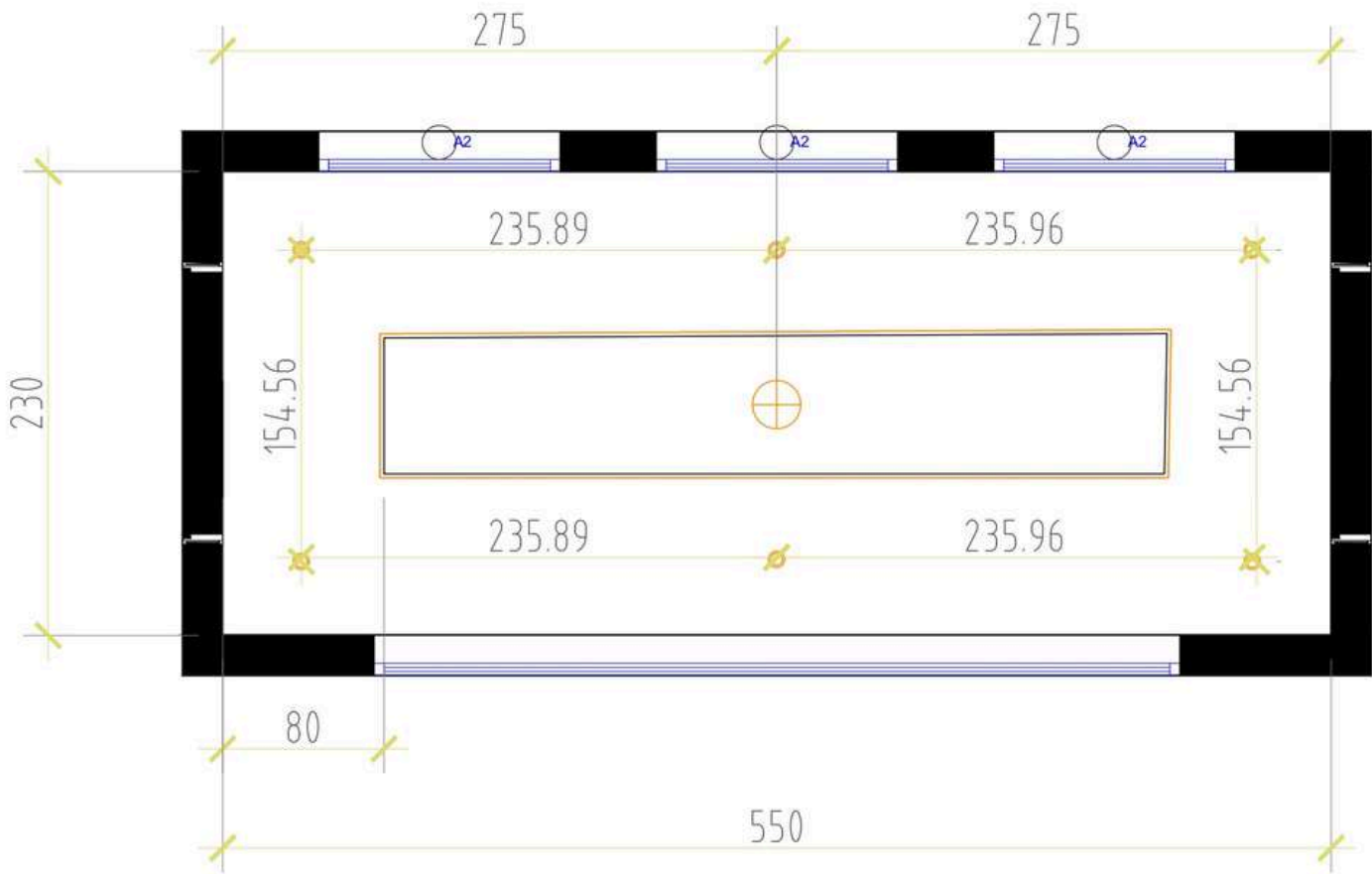




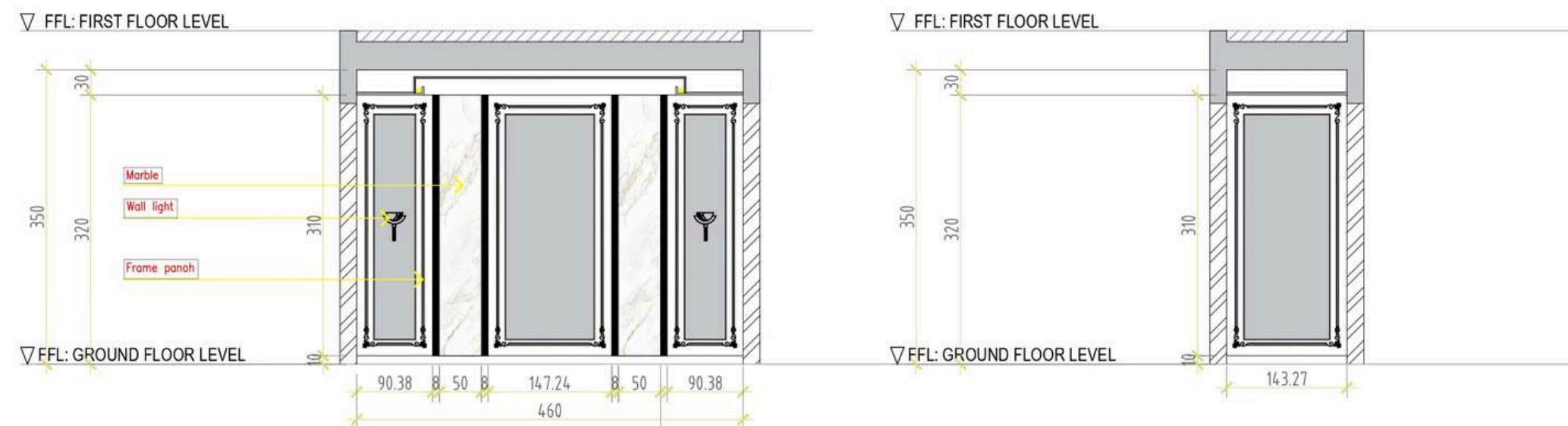
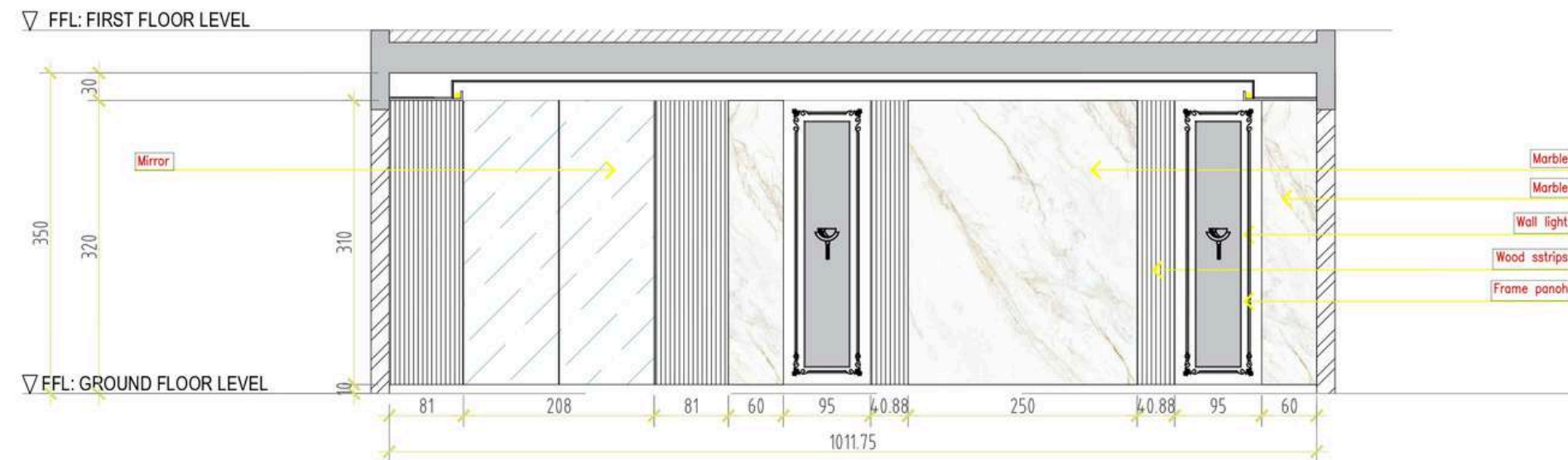
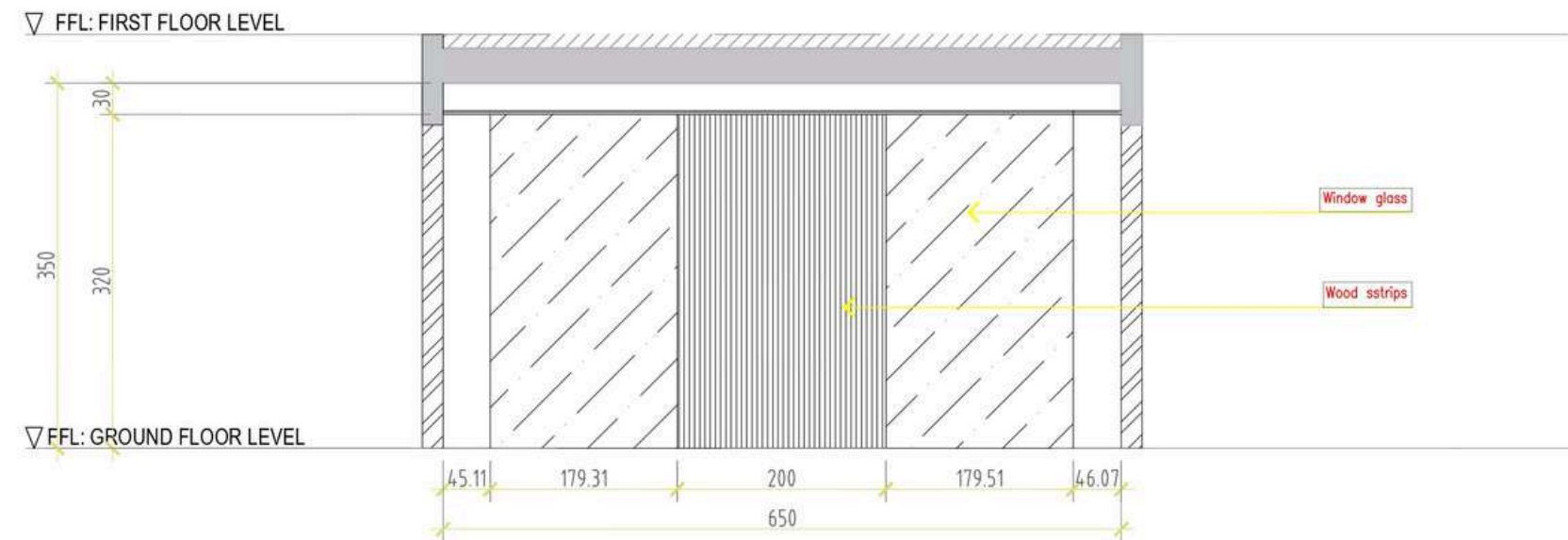
SHOP DRAWING



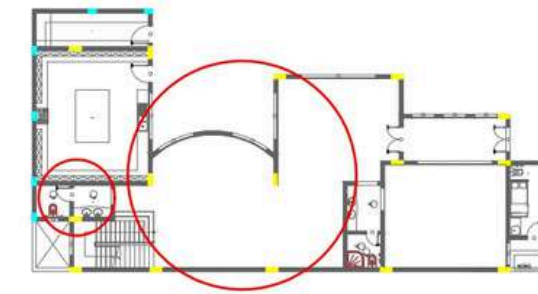




Indication Plan :	
General Notes:	
Client Name :	
MRS. Maha	
Project Name :	
Saloon	
Project Number :	
SU-22-QTN-ID232-	
Submission Date:	
17/11/2022	
Drawing Title :	
Ceiling Plan	
Drawing No :	
01	
Revision No :	
02	



Indication Plan :



General Notes:

Client Name :

MRS. Maha

Project Name :

Saloon

Project Number :

SU-22-QTN-ID232-

Submission Date:

17/11/2022

Drawing Title :

Elevations D+E+F

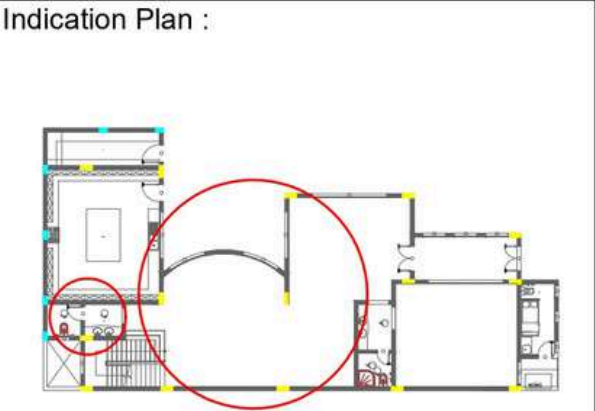
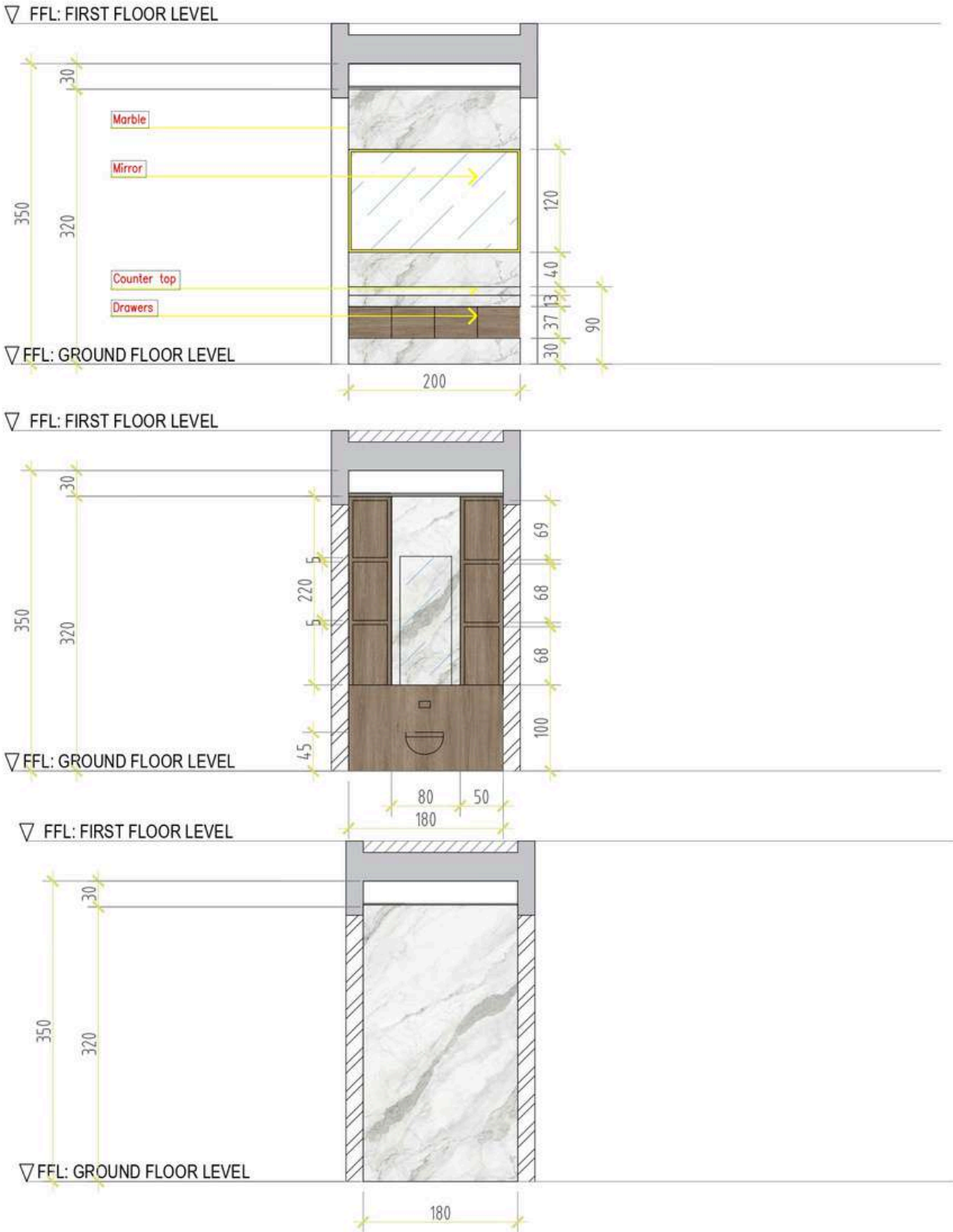
Drawing No :

01

Revision No :

02

SAHALA
DESIGN



General Notes:

Client Name :
MRS. Maha

Project Name :
Saloon

Project Number :
SU-22-QTN-ID232-

Submission Date:
17/11/2022

Drawing Title :
Elevations G+H+I

Drawing No :
01

Revision No :
02

CONTRACTING



Vibes
TOURISM



DYNAMIC INTERIOR DESIGN AND EXECUTION

FOR VIBES TOURISM OFFICE
BEIRUT

Blending modern aesthetics with functional design, the Vibes Tourism Office in Beirut showcases expertly crafted interiors that reflect the energetic and welcoming spirit of the travel industry.





Vibes
TOURISM.



FINAL EXECUTION



VISUAL



FINAL EXECUTION

VISUAL

FINAL EXECUTION



49

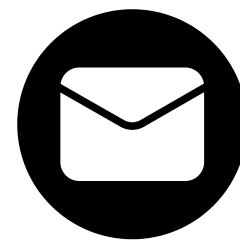
BEFORE



THANK YOU



+966 566707001



DESIGNSAHALA@GMAIL.COM



WWW.SAHALAKSA.COM